



Jeb Bush  
Governor

M. Rony Francois, M.D., M.S.P.H., Ph.D.  
Secretary

**PINELLAS COUNTY HEALTH DEPARTMENT**

**May 2006 Syndromic Surveillance  
Quality Assurance Report**

The Pinellas County Health Department has reviewed the data entered by all hospitals for the Syndromic Surveillance Program for the time period May 1 through May 31 for quality assurance purposes. We would like to thank all the participating hospitals for efforts they are making to continue improving the accuracy and reliability of this important community health monitoring system.

The total number of patients entered in May was 19,305, and the average daily rate in May was 622 entries per day. This is a 2% decrease over the total number of entries for last month and a 2.8% decrease over the number of entries for 1 year ago, in May 2005. The performance of each hospital was compared to how it performed the previous 2 months, and an asterisk (\*) after the entry indicates an improvement.

**Average Time from Patient Arrival to Data Entry**

*Determined by averaging the period of time from when the data is entered versus the patient arrival time*

**Goal: Average 4 hours or less**

Hospital	Average Entry Time (hours)		
	March 2006	April 2006	May 2006
All Children's	5	5	4 *
Helen Ellis	10	8	6 *
St. Anthony's	8	8	8
St. Pete General	31	13	13
Edward White	15	14	16
Palms of Pasadena	27	28	17 *
Sun Coast Hospital	21	21	21
Northside Hospital	23	32	21 *
Bayfront Medical	38	38	28 *
Largo Medical	24	29	29
Morton Plant	N/A	N/A	N/A
Mease Dunedin	N/A	N/A	N/A
Mease Countryside	N/A	N/A	N/A
VA Medical Center	N/A	N/A	N/A
<b>All Hospitals</b>	<b>21 hours</b>	<b>21 hours</b>	<b>16 hours</b>

### No Box Checked Rate

*The number of No Box Checked entries divided by the total patients entered*

**Goal: Less than 2% of records**

Hospital	No Box Checked Rate		
	March 2006	April 2006	May 2006
Edward White	0.19%	0%	0%
Sun Coast Hospital	0%	0%	0%
All Children's	0.03%	0.1%	0% *
Largo Medical	0.13%	0.3%	0% *
Northside Hospital	0%	1.8%	0.1% *
St. Pete General	0.37%	1.3%	0.3%*
St. Anthony's	1.2%	0.7%	0.6% *
Bayfront Medical	19.3%	8.3%	4.1% *
Palms of Pasadena	12.4%	12.0%	8.1% *
Helen Ellis	16.4%	18.6%	11.9% *
Morton Plant	N/A	N/A	N/A
Mease Dunedin	N/A	N/A	N/A
Mease Countryside	N/A	N/A	N/A
VA Medical Center	N/A	N/A	N/A
<b>All Hospitals</b>	<b>5.5%</b>	<b>4.0%</b>	<b>2.2%</b>

### Data Entry Rate

*The number of patients entered into STARS divided by each hospital's total ER census for the month*

**Goal: At least 90% of ER visits entered into database**

Hospital	Data Entry Rate		
	March 2006	April 2006	May 2006
Sun Coast Hospital	100%	100%	100%
All Children's Hospital	90%	99%	93%
Helen Ellis Memorial	94%	91%	93% *
Palms of Pasadena	84%	79%	83% *
Bayfront Medical	89%	CNP**	82%
Edward White Hospital	73%	75%	81% *
Largo Medical	70%	67%	55%
St. Pete General Hospital	97%	93%	CNP**
St. Anthony's Hospital	97%	87%	CNP**
Northside Hospital	87%	84%	CNP**
Morton Plant Hospital	N/A	N/A	N/A
Mease Dunedin	N/A	N/A	N/A
Mease Countryside	N/A	N/A	N/A
VA Medical Center	N/A	N/A	N/A
<b>All Reporting Hospitals</b>	<b>87%</b>	<b>86%</b>	<b>81%</b>

\*\*Census Not Provided

## **Duplicate Record Entries**

*The number of data entries that are considered to be duplicates divided by the total patients entered*

**Goal: Less than 1% of records duplicated**

<b>Hospital</b>	<b>Duplicate Rate</b>		
	<b>March 2006</b>	<b>April 2006</b>	<b>May 2006</b>
Sun Coast Hospital	0%	0%	0%
St. Anthony's	0.5%	0.4%	0.6%
Northside Hospital	1.7%	1.8%	0.9% *
Palms of Pasadena	0.7%	0.6%	1.0%
St. Pete General	2.6%	2.9%	1.1% *
Largo Medical	0.96%	1.4%	1.1%
Helen Ellis	1.9%	1.2%	1.3%
Bayfront Medical	1.4%	2.3%	1.5% *
Edward White	3.4%	1.3%	2.0%
All Children's	1.6%	1.4%	2.4%
Morton Plant	N/A	N/A	N/A
Mease Dunedin	N/A	N/A	N/A
Mease Countryside	N/A	N/A	N/A
VA Medical Center	N/A	N/A	N/A
<b>All Hospitals</b>	<b>1.4%</b>	<b>1.5%</b>	<b>1.2%</b>

## **Discussion**

The average amount of time it takes to enter the patient information into the STARS website after the patient has arrived at the facility has decreased to 16 hours for all participating hospitals. Sun Coast Hospital has the data automatically sent to the STARS website once per day, and is therefore unable to control the entry time.

Entering the correct date and time of patient arrival is important for linking patients during an epidemiologic investigation. Each hospital may check its own data through the "Reports" tab on the STARS website. Some hospitals use the triage time as the time of patient arrival and others use the time of disposition, which could make the time lapse appear to be smaller.

The overall No Box Checked rate decreased to 2.2%, with 7 hospitals below 2% for the month, which is the goal for the No Box Checked category. Having the majority of the forms filled out when the patient first arrives, usually in the triage area, will help to reduce the number left blank.

There was a reduction in the duplicate entry rate for 3 hospitals this month, with 3 hospitals reaching the goal of less than 1%. Since Sun Coast Hospital has the data sent automatically, there are no duplicates. One way to reduce the number of duplicate entries is to use the "CORR" function when

entering corrected records. Please remind all data entry personnel to type "CORR" before the MRN of the corrected entries to prevent them from being counted as duplicates.

There were 91 flags reported by the statistical analysis program during the month of May. It was necessary to contact a hospital 8 times (12% of cases reviewed) as a result of flags and 1 contact was made to Bayfront Medical Center without a flag present. There were 3 unexplained deaths reported this past month, none which turned out to be an actual unexplained death. Also, there were 11 botulism-like illness syndromes reported, all from Sun Coast Hospital. None of the cases were ever suspected to be botulism.

Non-significant flags are a sign of incomplete data collection or inconsistent data entry and there were 3 hospitals that had zero non-significant flags. The ongoing data review will help to identify areas that can be improved upon and the health department will work together with each hospital to implement these improvements.

#### Aberrant Flags by Hospital, May 2006

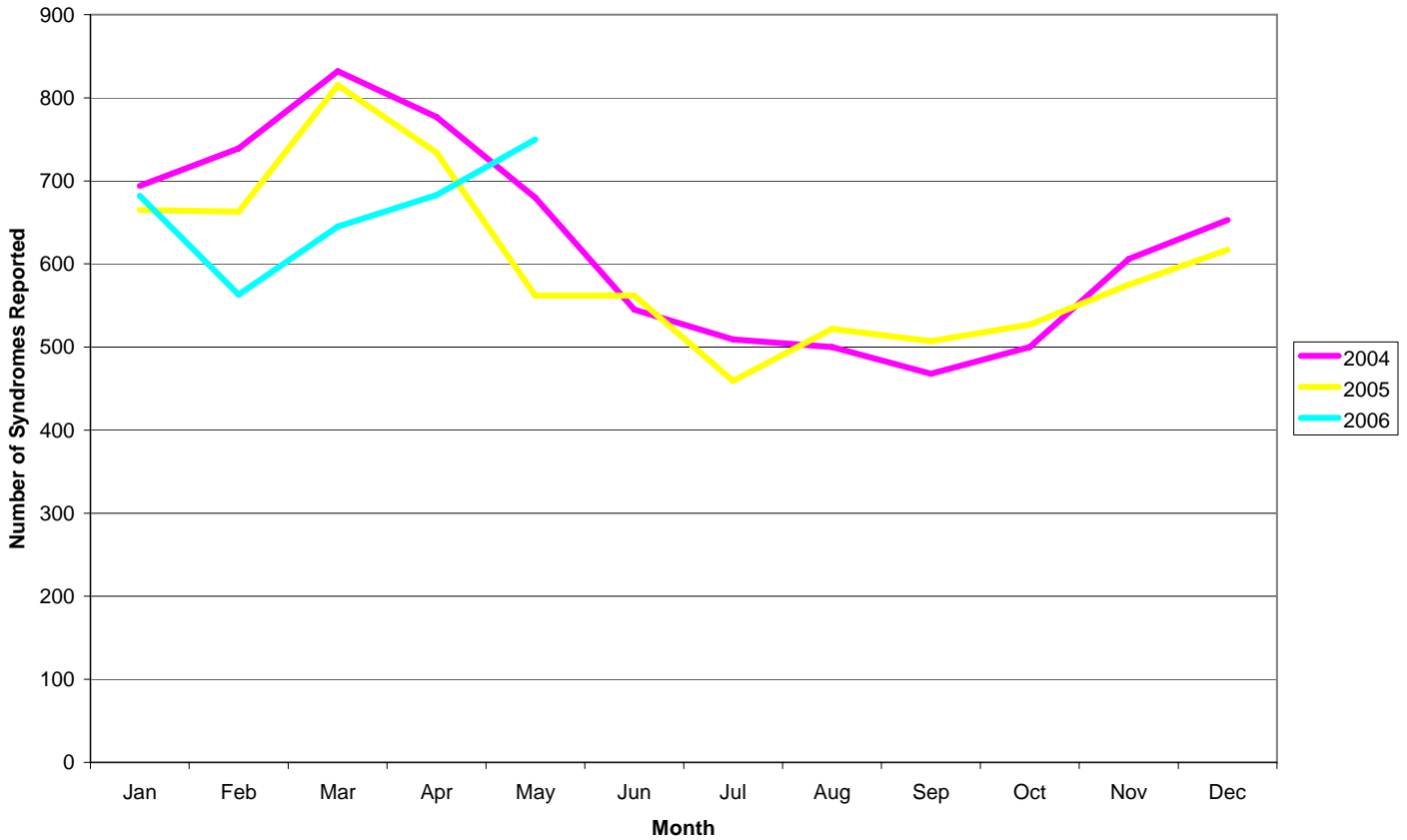
Hospital	Total Reported Flags	Non-significant Flags*	Flags Reviewed by CHD	Hospital Contacts
All Children's	3	0	3	1
Bayfront Medical	9	5	4	1**
Edward White	3	0	3	1
Helen Ellis	7	1	6	1
Largo Medical	2	0	2	0
Northside	7	2	5	0
Palms of Pasadena	7	1	6	1
St. Anthony's	15	8	7	1
St. Pete General	10	4	6	1
Sun Coast	14	1	13	1
Multiple Hospital/ Cumulative Flag	14	2	12	1
<b>TOTAL</b>	<b>91</b>	<b>24</b>	<b>67</b>	<b>9</b>

\*Refers to "None of the Following" and "No Box Checked" flags

\*\*Call was made without a flag present: Bayfront = 1

There has been an increase in the number of Gastroenteritis-Like syndromes reported over the past 2 months. As indicated in the graph below, the number of gastroenteritis-like syndromes usually increases sharply in the early spring, around March. However, this past year the number of cases has increased at a more gradual rate into May. There have been several Norovirus outbreaks in Nursing Homes and Assisted Living Facilities in the Pinellas County area over the past 2 months, which may be an indication of Norovirus present at a higher rate in the community.

**Number of Gastroenteritis-like Syndromes Reported by Month**



HCA Healthcare has indicated a willingness to implement the databridge in their hospitals and talks are ongoing with the Hillsborough CHD at this time. If you have any questions about any aspect of this report, or if you have any ideas about what you would like to see included in the report, please contact Suzanne DeKay at (727) 824-6900 x11291 or email at [Suzanne\\_DeKay@doh.state.fl.us](mailto:Suzanne_DeKay@doh.state.fl.us).