



Jeb Bush  
Governor

M. Rony Francois, M.D., M.S.P.H., Ph.D.  
Secretary

**PINELLAS COUNTY HEALTH DEPARTMENT**

**March 2006 Syndromic Surveillance  
Quality Assurance Report**

The Pinellas County Health Department has reviewed the data entered by all hospitals for the Syndromic Surveillance Program for the time period March 1 through March 31 for quality assurance purposes. We would like to thank all the participating hospitals for efforts they are making to continue improving the accuracy and reliability of this important community health monitoring system.

The total number of patients entered in March was 21,067, and the average daily rate in March was 680 entries per day. This is a 7.1% increase over the total number of entries for last month and a 5.8% decrease over the number of entries for 1 year ago, in March 2005. The performance of each hospital was compared to how it performed the previous 2 months, and an asterisk (\*) after the entry indicates an improvement.

**Average Time from Patient Arrival to Data Entry**

*Determined by averaging the period of time from when the data is entered versus the patient arrival time*

**Goal: Average 4 hours or less**

Hospital	Average Entry Time (hours)		
	Jan 2006	Feb 2006	March 2006
All Children's	5	6	5 *
St. Anthony's	7	8	8
Helen Ellis	6	9	10
Edward White	13	14	15
Sun Coast Hospital	21	21	21
Northside Hospital	23	29	23 *
Largo Medical	26	25	24 *
Palms of Pasadena	18	43	27 *
St. Pete General	22	34	31 *
Bayfront Medical	223	28	38
Morton Plant	N/A	N/A	N/A
Mease Dunedin	N/A	N/A	N/A
Mease Countryside	N/A	N/A	N/A
VA Medical Center	N/A	N/A	N/A
<b>All Hospitals</b>	<b>46 hours</b>	<b>21 hours</b>	<b>21 hours</b>

### **No Box Checked Rate**

*The number of No Box Checked entries divided by the total patients entered*

**Goal: Less than 2% of records**

Hospital	No Box Checked Rate		
	Jan 2006	Feb 2006	March 2006
Northside Hospital	0%	0.05%	0% *
Sun Coast Hospital	0%	0%	0%
All Children's	0.04%	0%	0.03%
Largo Medical	0%	0.08%	0.13%
Edward White	0%	0%	0.19%
St. Pete General	0.09%	2.8%	0.37% *
St. Anthony's	0.6%	1.8%	1.2% *
Palms of Pasadena	6.1%	5.1%	12.4%
Helen Ellis	10.6%	11.2%	16.4%
Bayfront Medical	23.6%	26.9%	19.3% *
Morton Plant	N/A	N/A	N/A
Mease Dunedin	N/A	N/A	N/A
Mease Countryside	N/A	N/A	N/A
VA Medical Center	N/A	N/A	N/A
<b>All Hospitals</b>	<b>5.0%</b>	<b>6.4%</b>	<b>5.5%</b>

### **Data Entry Rate**

*The number of patients entered into STARS divided by each hospital's total ER census for the month*

**Goal: At least 90% of ER visits entered into database**

Hospital	Data Entry Rate		
	Jan 2006	Feb 2006	March 2006
Sun Coast Hospital	100%	100%	100%
St. Pete General Hospital	CNP**	86%	97% *
St. Anthony's Hospital	87%	CNP**	97% *
Helen Ellis Memorial	91%	88%	94% *
All Children's Hospital	92%	94%	90%
Bayfront Medical	73%	91%	89%
Northside Hospital	82%	82%	87% *
Palms of Pasadena	85%	77%	84% *
Edward White Hospital	81%	79%	73%
Largo Medical	84%	81%	70%
Morton Plant Hospital	N/A	N/A	N/A
Mease Dunedin	N/A	N/A	N/A
Mease Countryside	N/A	N/A	N/A
VA Medical Center	N/A	N/A	N/A
<b>All Reporting Hospitals</b>	<b>85%</b>	<b>87%</b>	<b>87%</b>

\*\*Census Not Provided

## **Duplicate Record Entries**

*The number of data entries that are considered to be duplicates divided by the total patients entered*

**Goal: Less than 1% of records duplicated**

<b>Hospital</b>	<b>Duplicate Rate</b>		
	<b>Jan 2006</b>	<b>Feb 2006</b>	<b>March 2006</b>
Sun Coast Hospital	0%	0%	0%
St. Anthony's	0.2%	0.18%	0.5%
Palms of Pasadena	0.7%	0.41%	0.7%
Largo Medical	0.8%	0.56%	0.96%
Bayfront Medical	0.2%	0.96%	1.4%
All Children's	1.8%	2.2%	1.6% *
Northside Hospital	1.2%	2.4%	1.7% *
Helen Ellis	1.5%	2.0%	1.9% *
St. Pete General	1.9%	2.6%	2.6%
Edward White	1.7%	1.6%	3.4%
Morton Plant	N/A	N/A	N/A
Mease Dunedin	N/A	N/A	N/A
Mease Countryside	N/A	N/A	N/A
VA Medical Center	N/A	N/A	N/A
<b>All Hospitals</b>	<b>1.0%</b>	<b>1.3%</b>	<b>1.4%</b>

## **Discussion**

The average amount of time it takes to enter the patient information into the STARS website after the patient has arrived at the facility has stayed constant at 21 hours for all participating hospitals. Sun Coast Hospital has the data automatically sent to the STARS website once per day, and is therefore unable to control the entry time.

Entering the correct date and time of patient arrival is important for linking patients during an epidemiologic investigation. Each hospital may check its own data through the "Reports" tab on the STARS website. Some hospitals use the triage time as the time of patient arrival and others use the time of disposition, which could make the time lapse appear to be smaller.

The overall No Box Checked rate decreased to 5.5%, with 7 hospitals below 2% for the month, which is the goal for the No Box Checked category. Having the majority of the forms filled out when the patient first arrives, usually in the triage area, will help to reduce the number left blank.

There was a reduction in the duplicate entry rate for 3 hospitals this month, with 4 hospitals reaching the goal of less than 1%. Since Sun Coast Hospital has the data sent automatically, there are no duplicates. One way to reduce the number of duplicate entries is to use the "CORR" function when

entering corrected records. Please remind all data entry personnel to type "CORR" before the MRN of the corrected entries to prevent them from being counted as duplicates.

There were 99 flags reported by the statistical analysis program during the month of March. It was necessary to contact a hospital 5 times (8% of cases reviewed) as a result of flags and no contacts were made without a flag present. There was 1 unexplained deaths reported this past month, which did not turn out to be an unexplained death. Also, there were 6 botulism-like illness syndromes reported, most from Sun Coast Hospital. None of the cases were ever suspected to be botulism.

Non-significant flags are a sign of incomplete data collection or inconsistent data entry and there were 3 hospitals that had zero non-significant flags. The ongoing data review will help to identify areas that can be improved upon and the health department will work together with each hospital to implement these improvements.

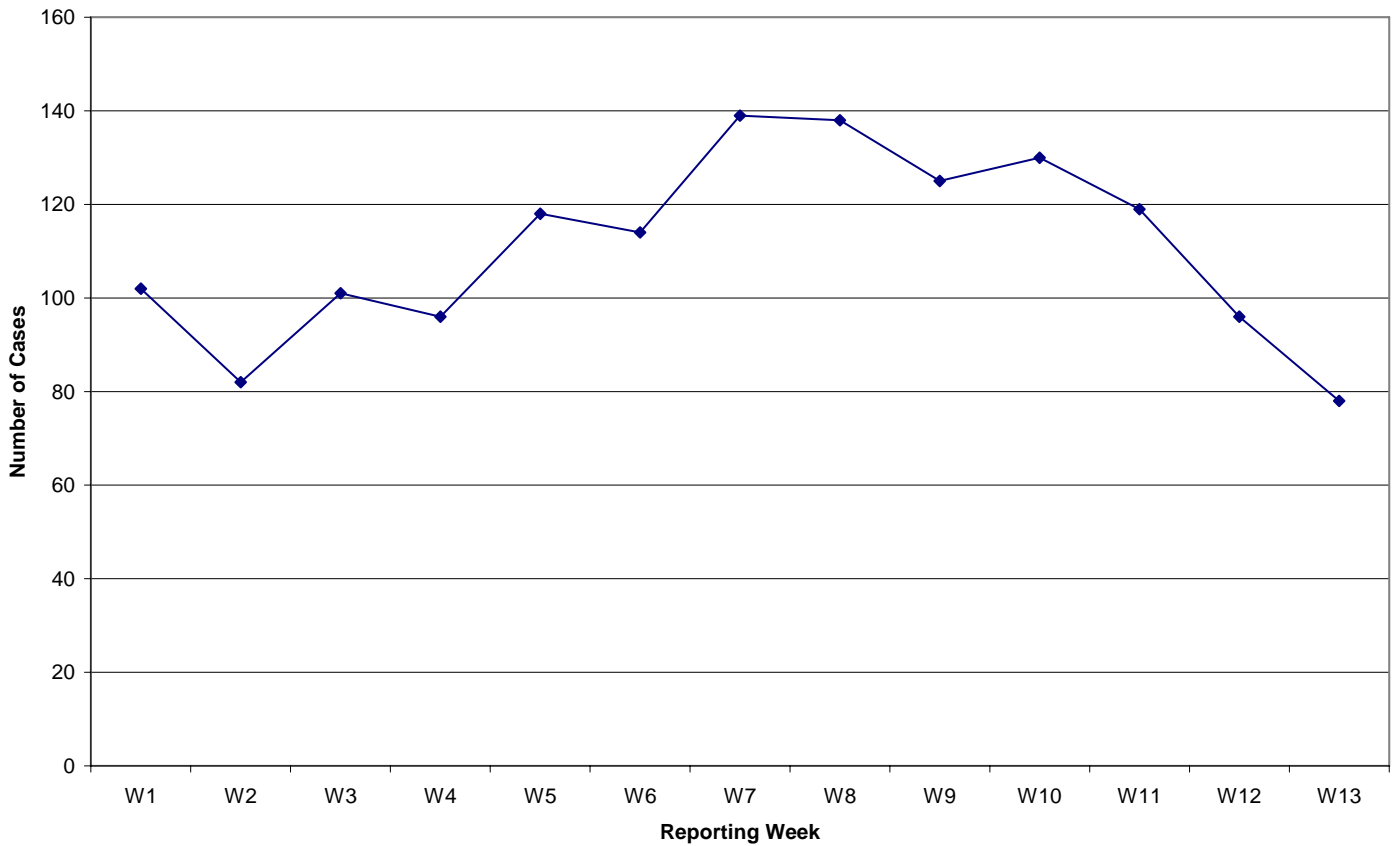
### Aberrant Flags by Hospital, March 2006

Hospital	Total Reported Flags	Non-significant Flags*	Flags Reviewed by CHD	Hospital Contacts
All Children's	4	0	4	0
Bayfront Medical	11	8	3	0
Edward White	7	2	5	0
Helen Ellis	13	4	9	2
Largo Medical	5	1	4	1
Northside	6	0	6	0
Palms of Pasadena	8	5	3	0
St. Anthony's	7	2	5	1
St. Pete General	5	3	2	0
Sun Coast	7	0	7	1
Multiple Hospital/ Cumulative Flag	26	9	17	0
<b>TOTAL</b>	<b>99</b>	<b>34</b>	<b>65</b>	<b>5</b>

\*Refers to "None of the Following" and "No Box Checked" flags

During the month of March, the number of respiratory syndromes reported in the STARS program each week has decreased; which is illustrated in the graph below. This could be an indication that the majority of the influenza season for Pinellas County has passed, and that it peaked in the middle of February.

**Number of Respiratory Syndromes Reported from January 1, 2006 through April 1, 2006**



A proposal has been submitted through the Urban Area Security Initiative grant requesting funds to complete the databridge project. If you have any questions about any aspect of this report, please contact Suzanne DeKay at (727) 824-6900 x11291 or email at [Suzanne\\_DeKay@doh.state.fl.us](mailto:Suzanne_DeKay@doh.state.fl.us).